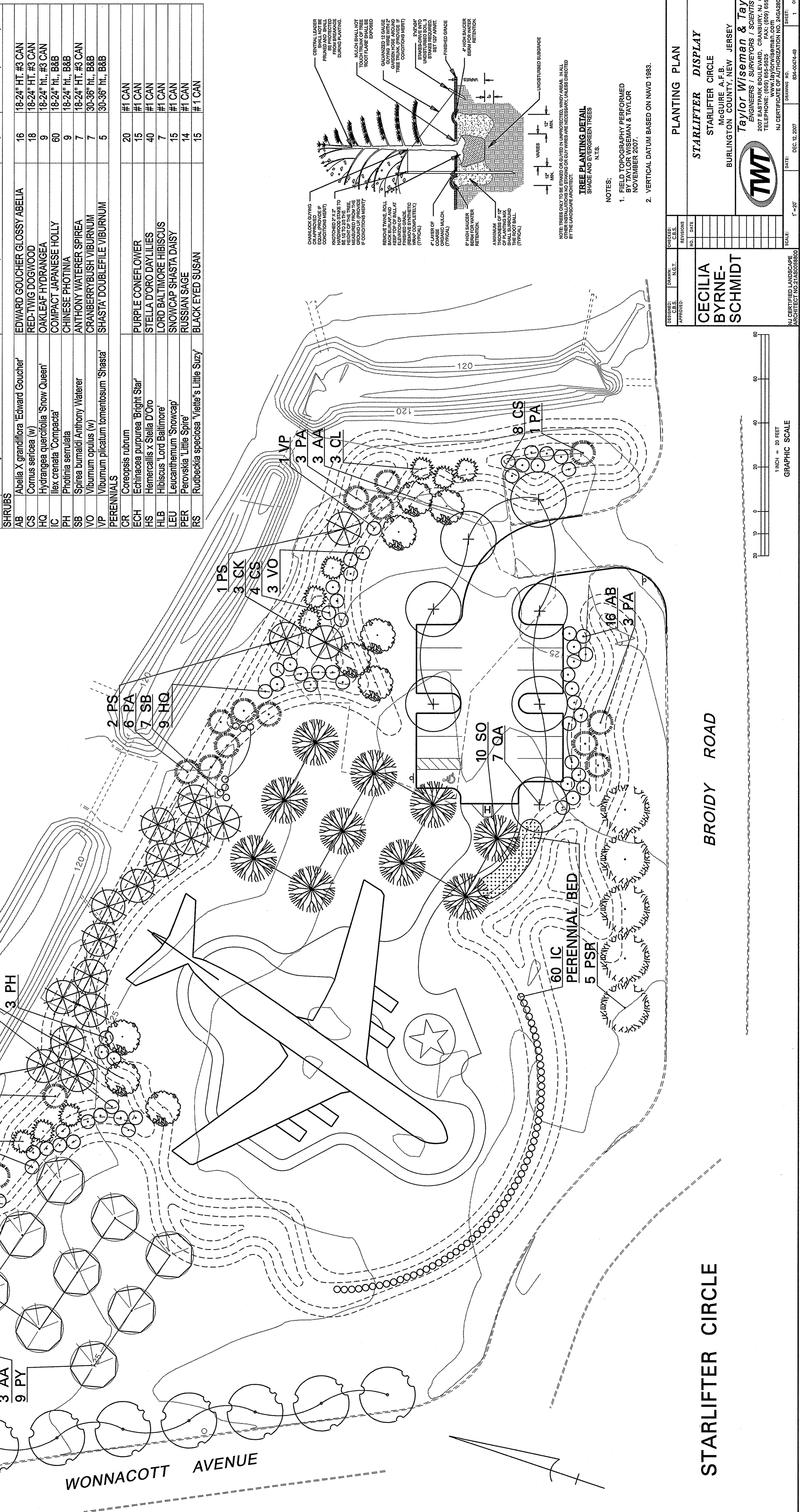
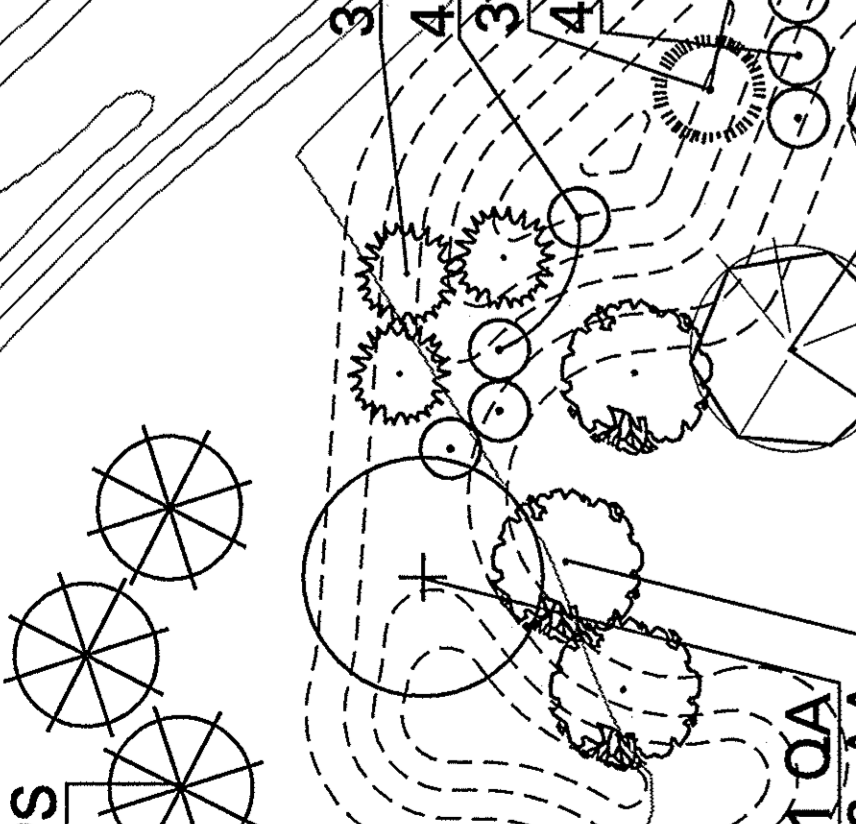
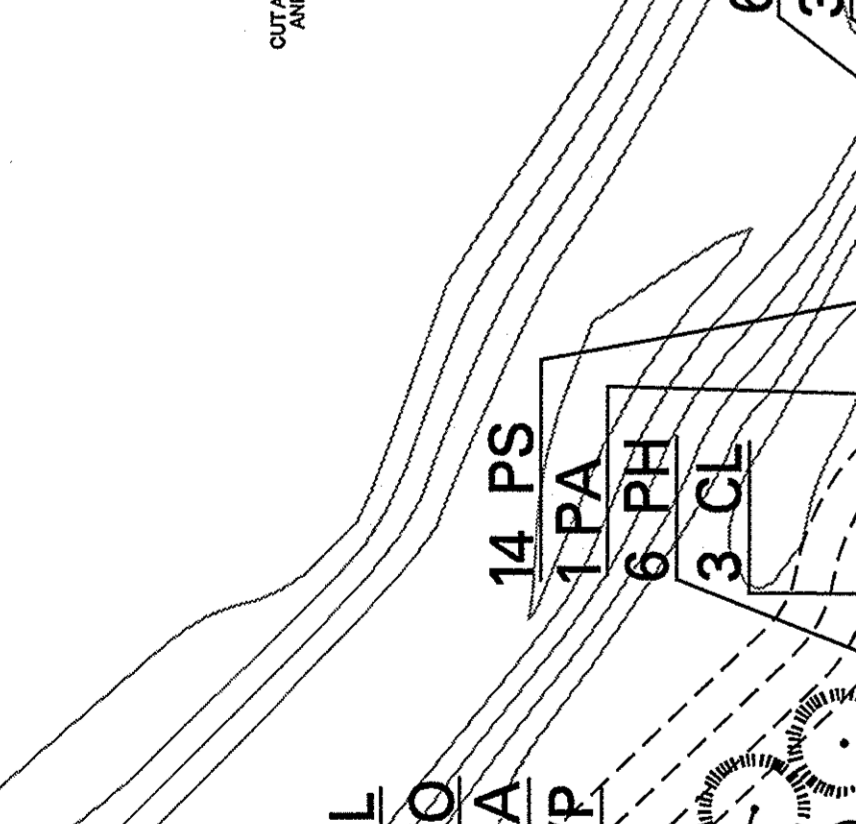
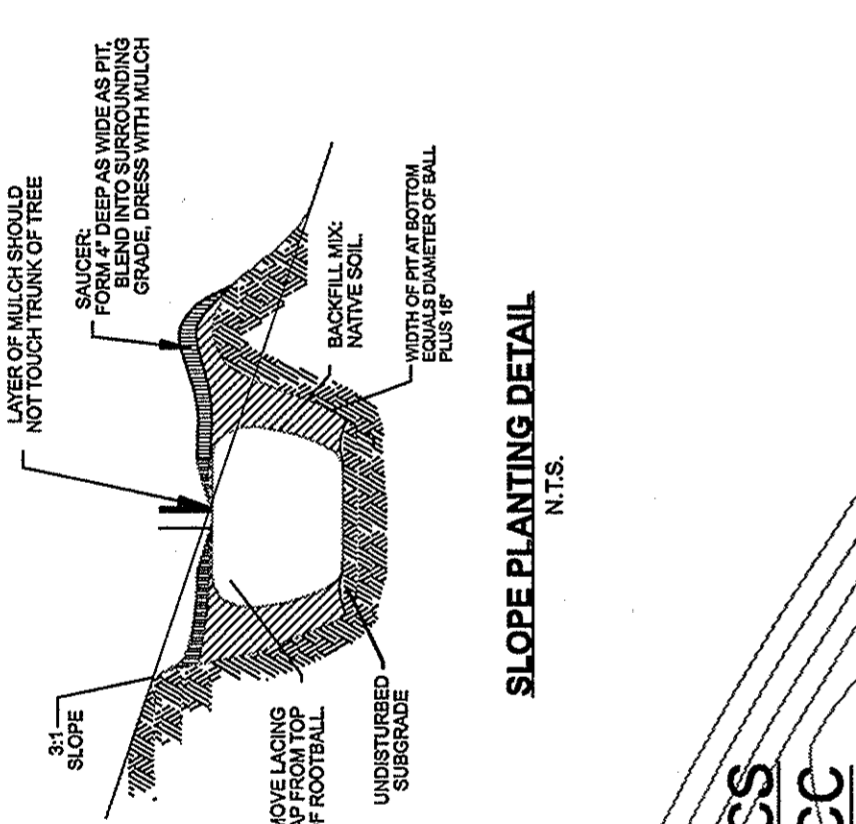
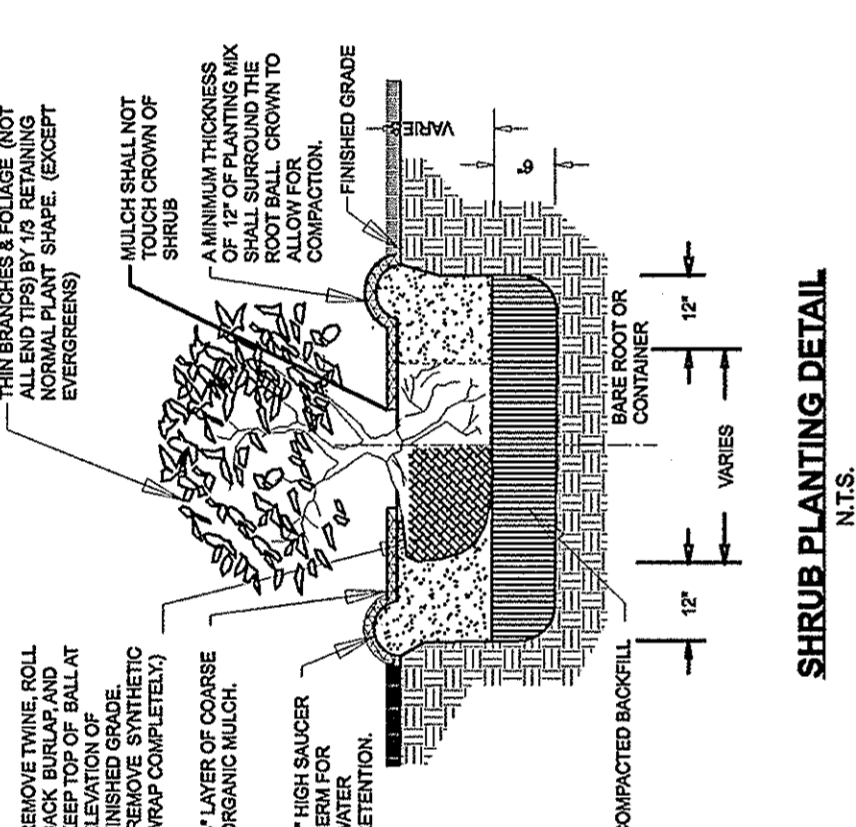


PLANTING SCHEDULE

KEY	BOTANICAL NAME	COMMON NAME	QUANTITY	SIZE/ROOTS/REMARKS
SHADE TREES:				
AR	Acer rubrum 'Red Sunset'	RED SUNSET MAPLE	9	2-2 1/2" cal., 13-15' ht., B&B
QA	Quercus acutissima	SAWTOOTH OAK	8	2-2 1/2" cal., 12-14' ht., B&B
SO	Sorbus alnifolia	KOREAN MOUNTAIN ASH	10	2-2 1/2" cal., 12-14' ht., B&B
EVERGREEN TREES:				
PA	Picea abies	NORWAY SPRUCE	14	7-8' ht., B&B
PS	Pinus strobus	WHITE PINE, SHEARED	20	8-10' ht., B&B, SHEARED
CL	Cupressus x leylandii	LEYLAND CYPRESS	9	7-8' ht., B&B
ORNAMENTAL TREES:				
AA	Amelanchier canadensis (w)	SERVICEBERRY	6	1-1 1/2" cal., B&B
CC	Cercis canadensis	EASTERN REDBUD, MULTI-TRUNKED	3	2" cal., 8-10' ht., B&B
CK	Cornus kousa	KOUSA DOGWOOD	3	1-1 1/2" cal., B&B
PSR	Prunus sargentii	SARGENT'S CHERRY, SPECIMEN UNIFORM	5	1-1 1/2" cal., B&B
PY	Prunus x yedoensis	YOSHINO CHERRY, SPECIMEN	9	2 1/2-3" cal., 10-12' ht., B&B
SHRUBS				
AB	Abelia X grandiflora 'Edward Goucher'	EDWARD GOUCHER GLOSSY ABELIA	16	18-24" HT. #3 CAN
CS	Cornus sericea (w)	RED-TWIG DOGWOOD	18	18-24" HT. #3 CAN
HQ	Hydrangea quercifolia 'Snow Queen'	OAK LEAF HYDRANGEA	9	18-24" ht., #3 CAN
IC	Ilex crenata 'Compacta'	COMPACT JAPANESE HOLLY	60	18-24" ht., B&B
PH	Photinia serrulata	CHINESE PHOTINIA	9	18-24" ht., B&B
SB	Spirea bumaldii 'Anthony Waterer'	ANTHONY WATERER SPIREA	7	18-24" HT. #3 CAN
VO	Viburnum opulus (w)	CRANBERRY BUSH VIBURNUM	7	30-36" ht., B&B
VP	Viburnum plicatum tomentosum 'Strasita'	SHASTA DOUBLEFILE VIBURNUM	5	30-36" ht., B&B
PERENNIALS				
CR	Coreopsis rubrum	PURPLE CONEFLOWER	20	#1 CAN
ES	Echinacea purpurea 'Bright Star'	PURPLE CONEFLOWER	15	#1 CAN
HS	Hemerocallis x Stella D'Oro	STELLA D'ORO DAY LILIES	40	#1 CAN
HLB	Hibiscus 'Lord Baltimore'	LORD BALTIMORE HIBISCUS	7	#1 CAN
LEU	Leucanthemum 'Snowcap'	SNOWCAP SHASTA DAISY	15	#1 CAN
PER	Perovskia 'Little Spire'	RUSSIAN SAGE	14	#1 CAN
RS	Rudbeckia speciosa 'Viete's Little Suzy'	BLACK EYED SUSAN	15	#1 CAN



NOTES:

- FIELD TOPOGRAPHY PERFORMED BY TAYLOR WISEMAN & TAYLOR NOVEMBER 2007.
- VERTICAL DATUM BASED ON NAVD 1983.

OTHER INSTALLATIONS AND SPACING OR GUY WIRES ARE NECESSARY, UNLESS DIRECTED BY THE LANDSCAPE ARCHITECT.

TREE PLANTING DETAIL
SHADE AND EVERGREEN TREES
N.T.S.

REMOVE TWINE ROLL, ALL BIRD TPB BY 1/2" REMAINING. KEEP TOP OF BALL AT FINISH GRADE. REMOVE SYNTHETIC FIBER FROM GROUND. REMOVE TWINE ROLL IF ANY COMPACTED. 4" LAYER OF COARSE ORGANIC MULCH. 2" HIGH GAUGER BEAM FOR WATER RETENTION. FINISHED GRADE. 12" VERT. 12" VERT.

CECILIA BYRNE-SCHMIDT

STARLIFTER DISPLAY

STARLIFTER CIRCLE
McGUIRE A.F.B.
BURLINGTON COUNTY, NEW JERSEY

Taylor Wiseman & Taylor
ENGINEERS / SURVEYORS / SCIENTISTS
2007 EASTPARK BOULEVARD, CRANFORD, NJ 08512
TELEPHONE: (609) 665-9325
FAX: (609) 665-4668
NJ CERTIFICATE OF AUTHORIZATION NO. 246A28032800

PLANTING PLAN

DESIGNED: C.E.S.
DRAWN: N.G.T.
CHECKED: C.E.S.
APPROVED: N.G.T.

REVISIONS

NO. DATE

SCALE: 1" = 20'

DATE: DEC. 12, 2007

DRAWING NO.: 854-00474-49

SHEET: 1 OF 1